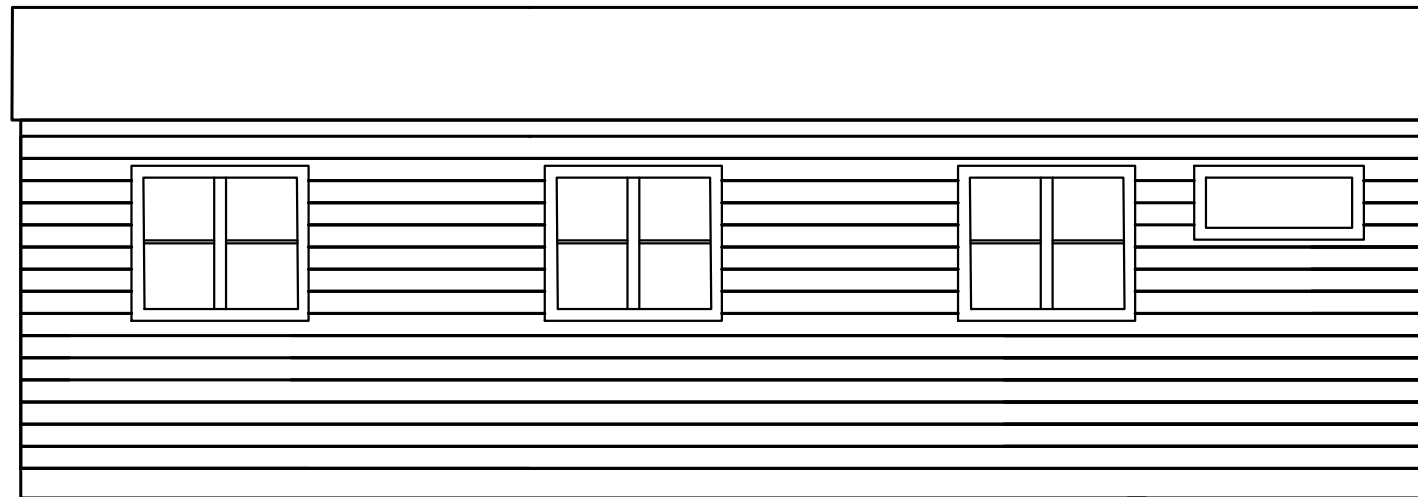


Nutzfläche: 21,92m²

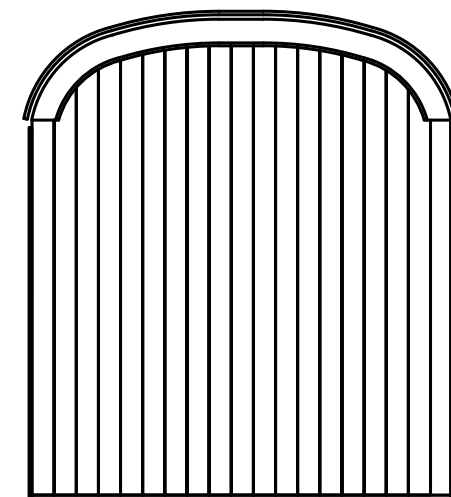
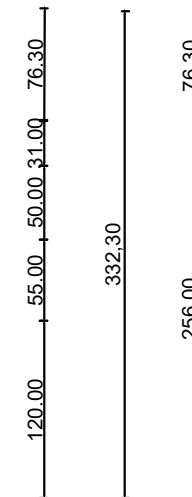
Bruttogeschossfläche: 27,36m²



6.00 | 75.00 | 120.00 | 160.00 | 120.00 | 160.00 | 120.00 | 40.00 | 115.00 | 40.00 | 6.00

950.00

962.00



287.60

294.60

PROJEKT: Zirkuswagen Mobile Home		www.zirkuswagen.at	
PLANNAME: ZW_MH2			
DATUM: 8.10.2021	ERSTELLER: Peter Schlacher	MSTB: angepaßt	ANM.: